

CMD

Cotton Mouton Diagnostics



Company snapshot

Spin-out

‘Sensing’ company

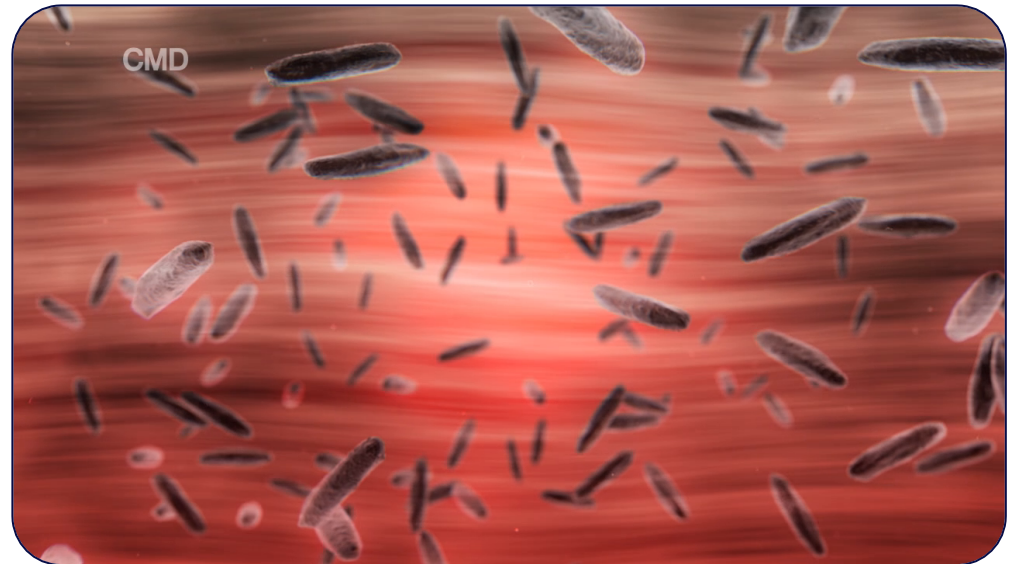
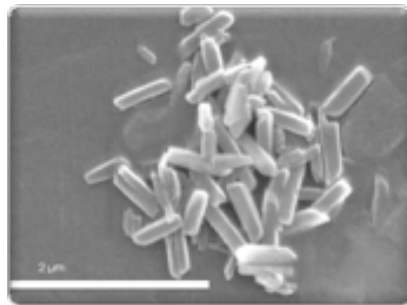
Innovate UK funding

Core team of 8 (technical and managerial)



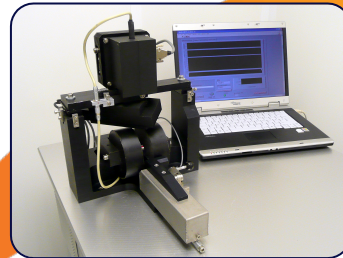
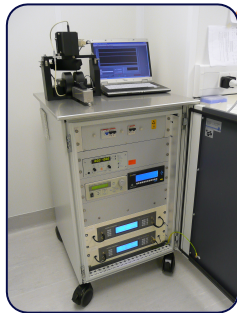
Our technology - *Background*

Unique, patent-protected, magneto-optical sensing platform



Our technology - *Background*

Unique, patent-protected, magneto-optical sensing platform

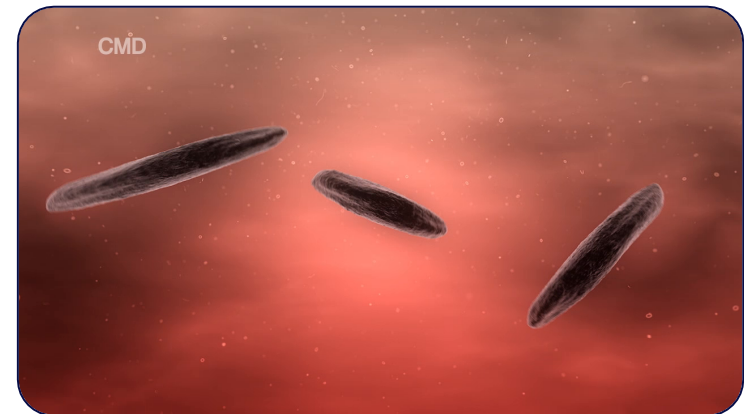
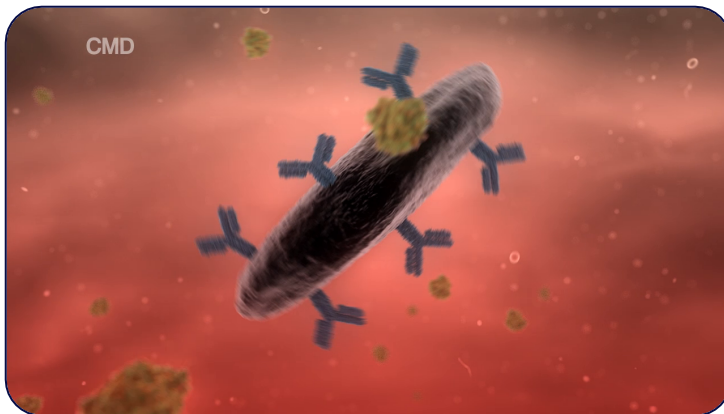


Field tested on >
1,000 patients
using finger prick
whole blood
samples

Gates and EU funding ~ £2M

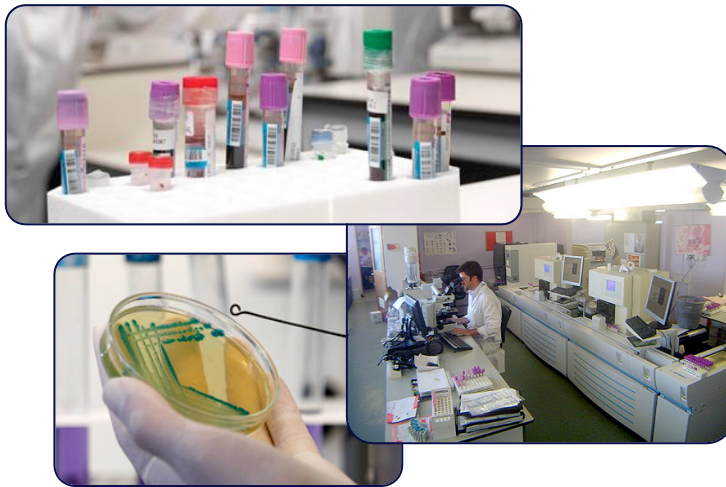
Our technology - *Transformation*

‘Innovative magneto-optical sensing platform exploiting changes in rotational behaviour of magnetic reporters’

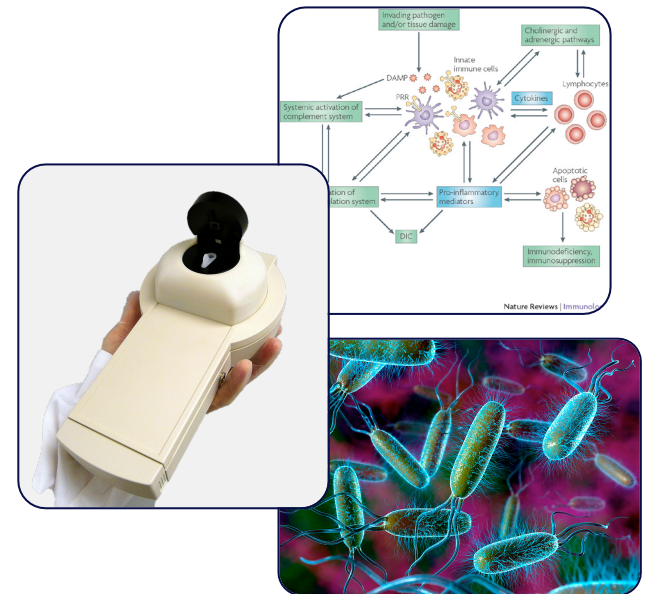


Our technology – *Competitive advantage*

Unique, patent-protected, magneto-optical sensing platform

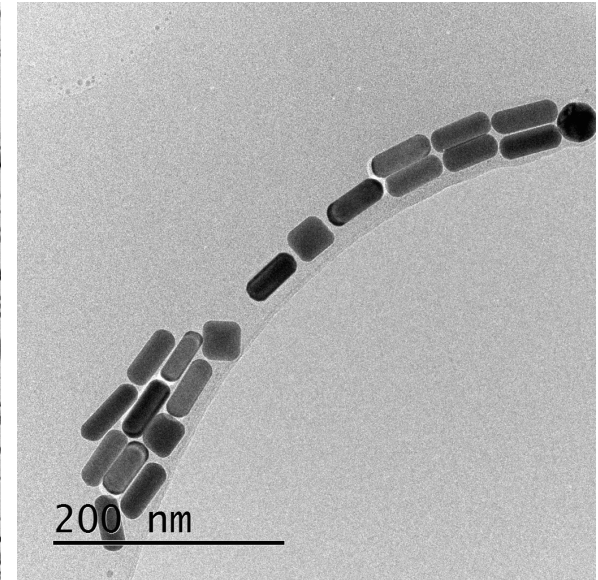
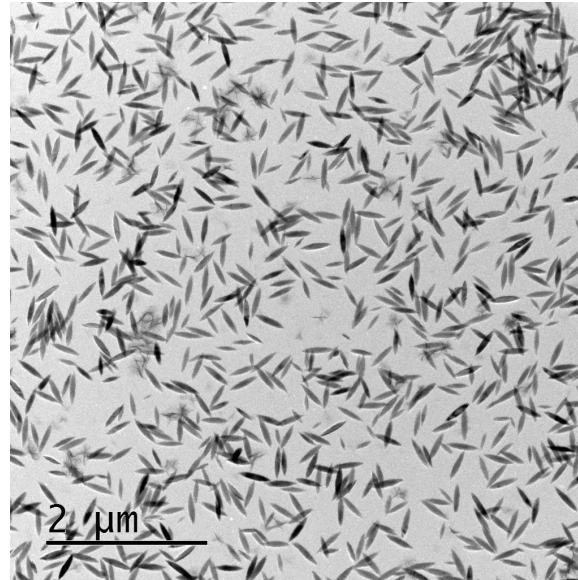
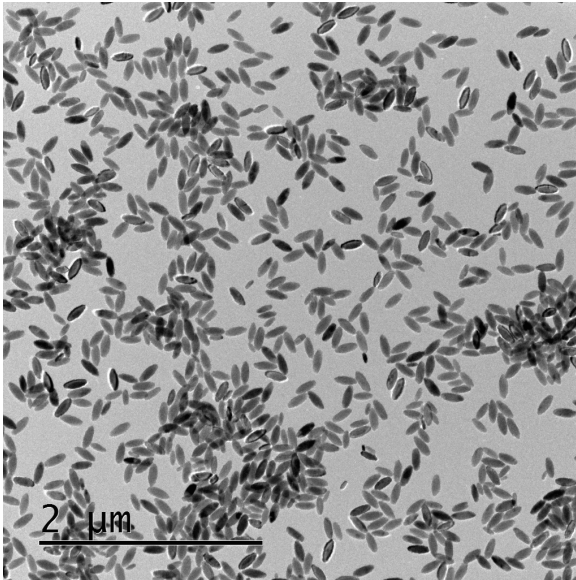


Current approach - Centralised
Time to result – hours / days



CMD Technology – Point-of-need
Time to result – 15 minutes

Our technology – *Where are we now?*





In the UK
100,000
people suffer from
sepsis every year,
37,000
of them die

Each year sepsis
costs the NHS
£4bn

One hour delay
in diagnosis
↓
**7% increase in
risk of death**

**Absolute,
unequivocal
unmet need for
a PoC
diagnostic**

Endotoxin testing



Very small
amounts of
endotoxin can
kill – test all
parenteral
formulations

LAL Assay:
Animal issue
Cumbersome
Prone to
interference

MAT Assay:
Human cells
Pre-incubation
ELISA

**Regulators
open to
alternative
technologies**

Veterinary Diagnostics



Trends in
veterinary IVDs
mimic that in
human health

‘Patient’ and
diagnostic
environment
varies
significantly

Regulatory
constraints
generally less
onerous

**Assay to be
decided upon
collaboratively**

Summary

- Versatile platform – multiple applications
- Proof of Principle demonstrated in Malaria
- Strong IP protection
- Management team in place
- Experienced technologists with proven track record
- Developing marquee application – Sepsis
- Plus lower risk applications – Endotoxin & Veterinary