

Scitech.



**Chartered
Building
Company**



About Scitech

- Multi-disciplinary design and construction company
 - Consultancy, design, construction, qualification & compliance
- Sector specialist
 - Pharmaceutical, biotech, life sciences, research and development
- 130+ in-house talent
 - Sector and technical expertise
 - Qualified professionals
CIBSE, RIBA / ARB, IET, IMechE, IChemE, MCIQB, RICS
- Regional offices
 - Cardiff (New)
 - Guildford (Head Office)
 - Antwerp
- Solid foundation
 - Founded in 2002, owned as Employee Benefit Trust since 2012
 - Independent, no external backers and no debt



Service Overview



- **Consultancy**
Operational excellence, regulatory and compliance support, quality by design techniques (incl. PAT), facility start-up, environmental control and energy saving.
- **Design**
Master planning, feasibility, concepts, option studies
- **Engineering (Process & Facilities)**
Full multidisciplinary coordinated 3D and BIM capability
- **Project and Cost Management**
Concept to start-up
- **Construction**
Procurement, construction management, principal contractor, commissioning
- **Validation**
Integrated commissioning and validation from URS to PQ

Project Type Examples

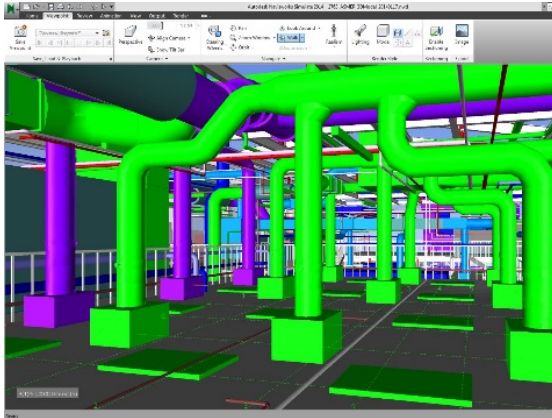
New Facility Design & Build



Facility Refurbishment



Detailed Design/Front End Study



Validation Support



Sector Specialisms

- **Laboratories**

- Discovery research
- Lab automation systems
- Bio-containment
- Quality assurance / quality control
- Microbiology
- Stem cell / regenerative medicine



- **Development Facilities**

- Formulation + analytical labs
- Development pilot plants
- Kilo labs
- Clinical trial
- Agrochemical R&D



- **Primary Manufacturing**

- Biopharmaceutical
- Nuclear medicine
- Chemical API



- **Secondary Facilities**

- Oral solid dosage
- Inhalation devices
- Liquid organic compound
- Fill and finish

- **Packing**

- All dosage forms

- **Logistics**

- Cold chain
- Distribution warehousing

- **Diagnostics**

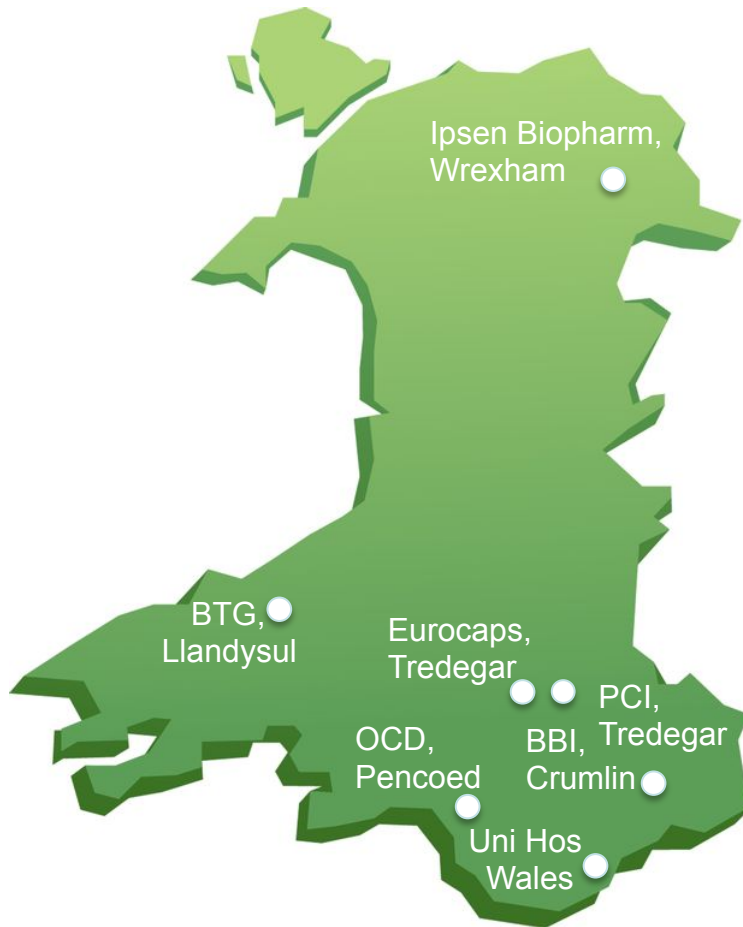
- Devices
- PET / CT, SPECT, MRI scanning



Project Examples



Welsh Client Examples



- **Ipsen Biopharm**
 - Validation Support during shutdown period
- **BTG**
 - Ongoing Validation Support (>4years)
- **PCI (Penn)**
 - New high containment facility
 - New ISO 8 facility
 - New roller compactor area
- **Eurocaps**
 - Computer Validation Support
- **OCD**
 - Relocation of Equipment from Cardiff to Pencoed
- **University Hospital of Wales**
 - New Radiopharmaceutical Facility and Scanning Suite
- **BBI**
 - Full Facility Fit Out

University Hospital of Wales – PET Centre

Project: All Wales PET Centre
Location: Heath Hospital, Cardiff
Project Value: Confidential
Scope of Services: Design & engineering, procurement & construction support, GMP and Home Office Validation.



Penn / PCI Pharma – High Containment Facility

Project: High Containment Facility, Project PennDragon
Location: Tredegar, Gwent, South Wales
Project Value: £13m
Scope of Services: Concept Design, Detailed Design, Construction Management, and Facility Qualification



BBI – Global Headquarters, Laboratory Facility

Project: Remodel building to create laboratories and production facility

Location: Crumlin, Wales

Time Scale: 2017 to 2018

Scope of Services: Masterplan, Design, Construction and Commissioning

Staff Lead: Andy Turvil, Project Manager



Selected Clients

Pharmaceutical

Abbott Laboratories
Actavis
Aesica
Baxter
BBI
Boots
Catalent
Eurocaps
Fresenius Kabi
GlaxoSmithKline
Ipsen Biopharm
Janssen Pharmaceutica
Medgenix
MSD
Organon (Schering Plough)
Penn Pharma
Pfizer
Schering Plough
Taro Pharmaceuticals
TEVA

Radiopharmacy / Imaging

University of Cardiff
University of Oxford
Guys & St Thomas' Hospital
GSK
Bayer

Biotechnology

Amgen
Allergan
BTG
Covance
Genemedix
Genzyme
Lonza
MedImmune
Merial
Ovagen
SynCo
UCB
Pfizer (Wyeth Biopharma)

Diagnostics

Bayer
GE Healthcare
OCD (J&J)

Medical Devices

Becton Dickinson
Corin Medical
Lifescan (J&J)
Medicare
Sterling Medical Solutions

Veterinary Products

MSD Animal Health

Fine Chemicals / Formulation

Kemira
Syngenta
Hexcel

Government

Public Health England
Porton Biopharma
NIBSC

Universities

Kings College, London
University of Cardiff
NUI Galway
University of Sussex
University of Surrey
University of Hull

Hospitals

Royal Victoria Hospital, Belfast
Hammersmith Hospital
Christie Hospital, Manchester
Guy's & St Thomas, London
University Hospital Wales

The Scitech Difference

- Proven record locally and internationally;
- Recognising and delivering client needs and expectations;
- Sector specialist;
- Multidisciplinary in-house delivery team:
 - Design and engineering;
 - Equipment specification and management;
 - Construction procurement;
 - Construction and construction management;
 - Commissioning management;
 - Qualification and validation;
- Integrated project delivery – from inception to operation;



Thank you

www.scitech.com



**Chartered
Building
Company**

CHAS

Accredited Contractor
CHAS.co.uk

