

---

**Capital**

# Supporting your organisation

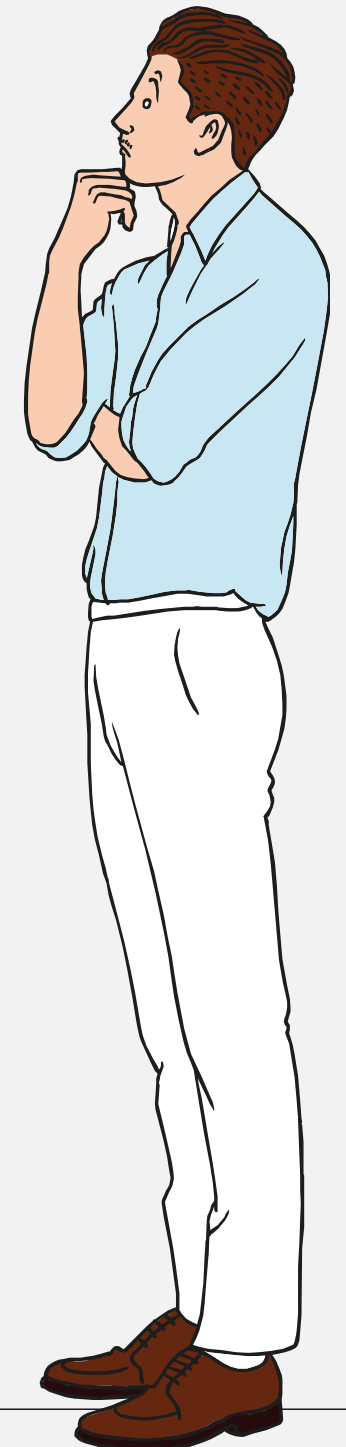
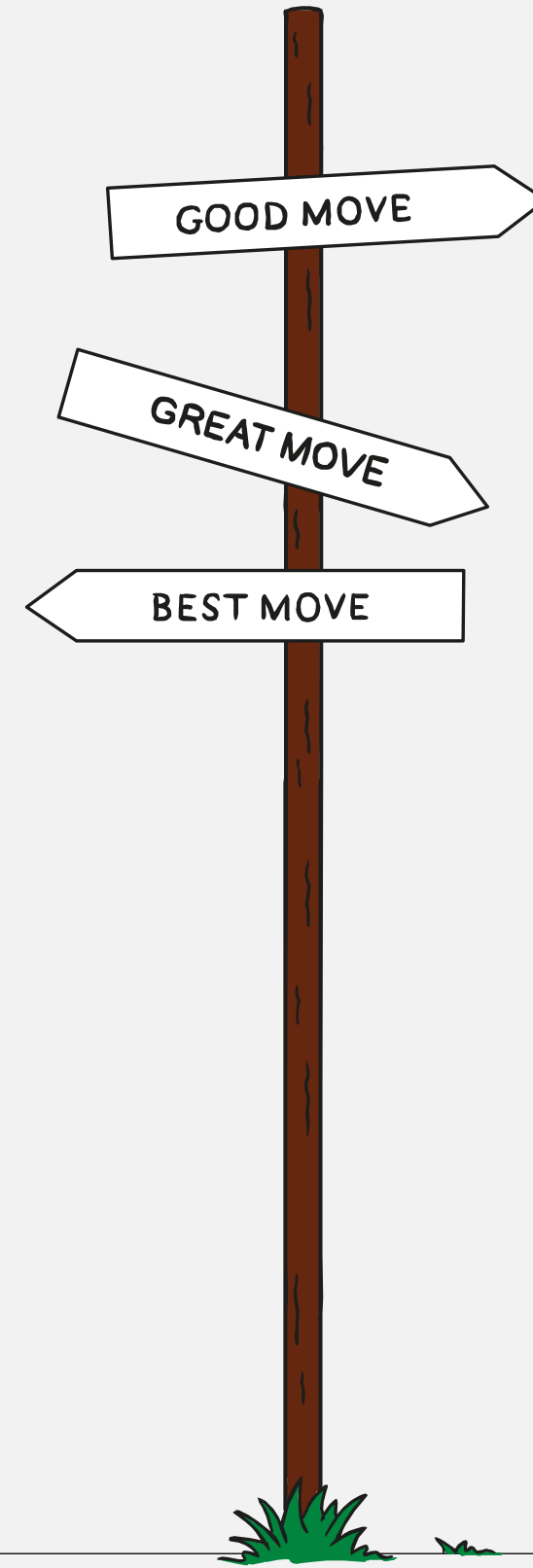
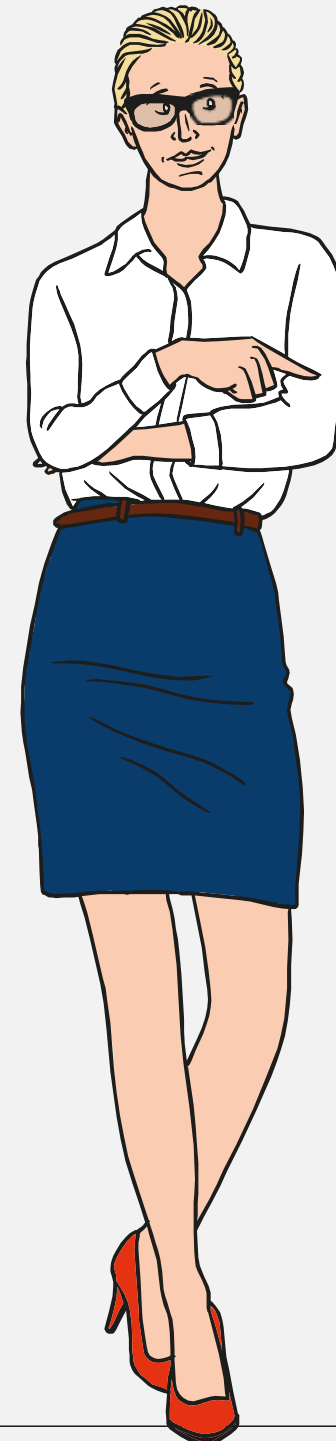
---

03.03.2020

**Kellsey Logue**  
Solicitor  
*Capital Law Limited*

© 2020 Capital Law Limited

---



**01**  
**We can help you  
with**

- Commercial agreements—distribution, research & development, collaborations, supply agreements
- Maximising the value of your intellectual property
- Part funded intellectual property audits
- Data management and GDPR
- Investment and finance

# 02 We can help you with

- Brexit planning
- Sector specific Brexit advice
  - advice on import/export requirements, advice on supply chains and reviewing existing and future contracts in light of Brexit in the Life Sciences sector
- Accessing international networks and compliance with international law
- Cross-jurisdictional commercial contracts
- Commercial dispute resolution
- Employment and immigration advice
- Property transactions

# 03 Beyond Borders

We know businesses rarely stay within borders in the life sciences sector.

We work internationally and are active members of various international networks:

- Consulegis
- China Collaborative Group
- GBL Alliance

We work closely with the Embassy of Switzerland in the UK and have been the official address for the Swiss consulate in Cardiff for several years.

Home to a global life science cluster, Switzerland has recently confirmed its intention to build stronger links with Wales in this sector.

# 04 International Desks

Our strong connections with a global network of law firms allows us to support business ambitions all over the world.

Operating or trading internationally?

Need support navigating international legal and regulatory environments?

- International desks launched to facilitate speedy and direct access to the services you need globally
- Each international team is made up of lawyers who originate, or are intimately familiar with the countries they represent

---

**Capital**

**Thank you**



**Kellsey Logue**  
Solicitor

**Tel: 02920 474095**  
**[k.logue@capitallaw.co.uk](mailto:k.logue@capitallaw.co.uk)**